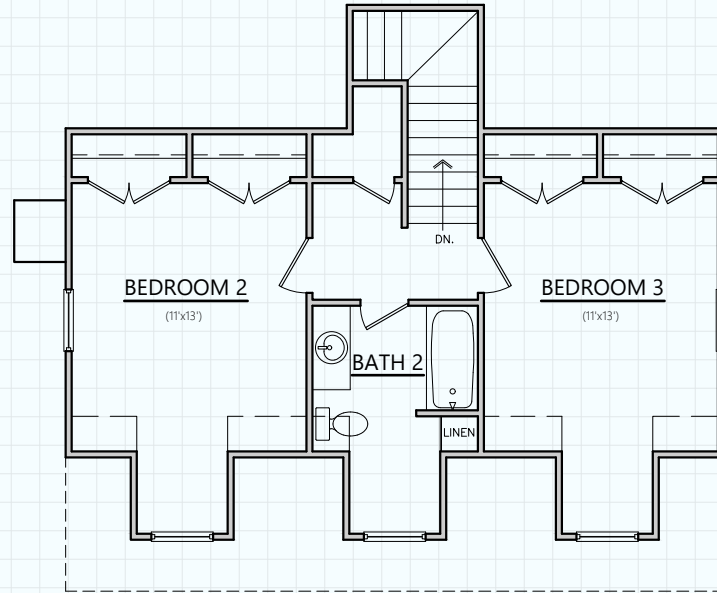
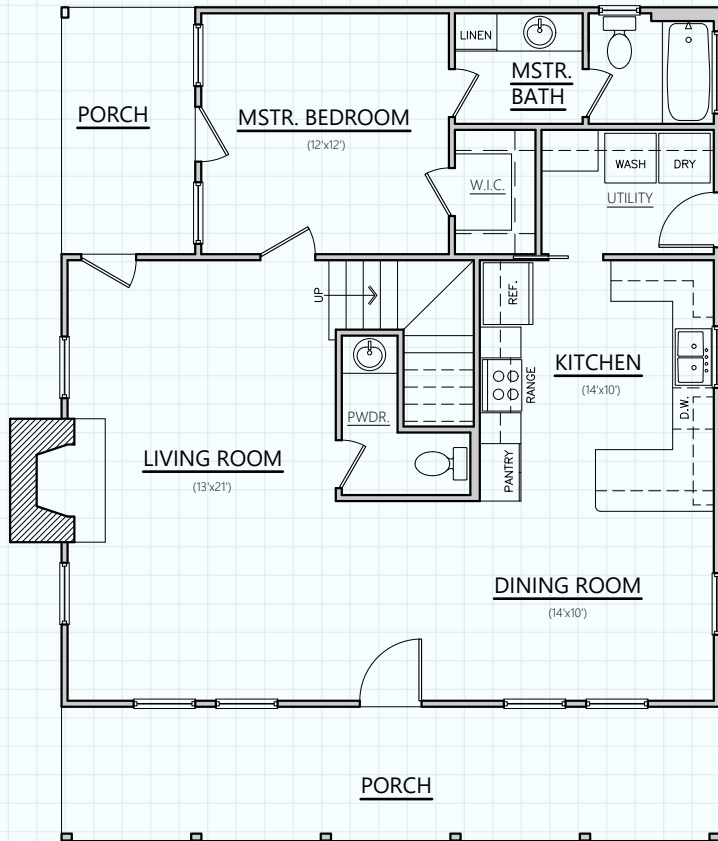




THE S.F. AUSTIN	
FIRST FLOOR:	1,032 SQ. FT.
SECOND FLOOR:	563 SQ. FT.
LIVING (A/C):	1,595 SQ. FT.
PORCHES:	286 SQ. FT.
SLAB:	1,318 SQ. FT.
TOTAL:	1,881 SQ. FT.



*Hill Country*  
**CLASSICS™**  
**CUSTOM HOMES**  
*Boerne Texas*

34535 IH 10 West  
 Boerne, TX 78006  
 (830) 249-2920  
 hillcountryclassics.com