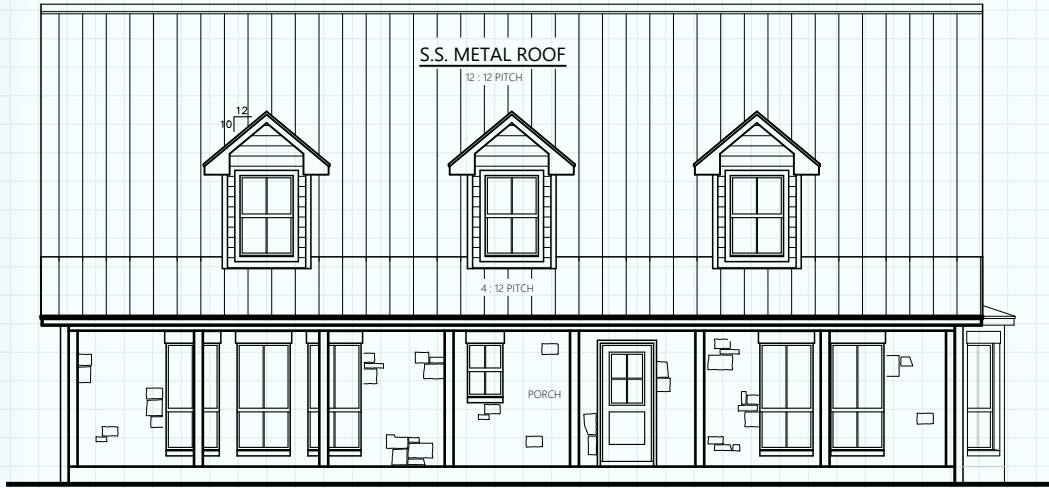


Hill Country CLASSICS™ CUSTOM HOMES

Boerne Texas

34535 IH 10 West
 Boerne, TX 78006
 (830) 249-2920
 hillcountryclassics.com



THE HONDO

FIRST FLOOR:	1,733 SQ. FT.
SECOND FLOOR:	1,060 SQ. FT.
LIVING (A/C):	2,793 SQ. FT.
PORCHES:	350 SQ. FT.
MAS. LUG:	52 SQ. FT.
SLAB:	2,135 SQ. FT.
TOTAL SQ.FT.:	3,195 SQ. FT.

