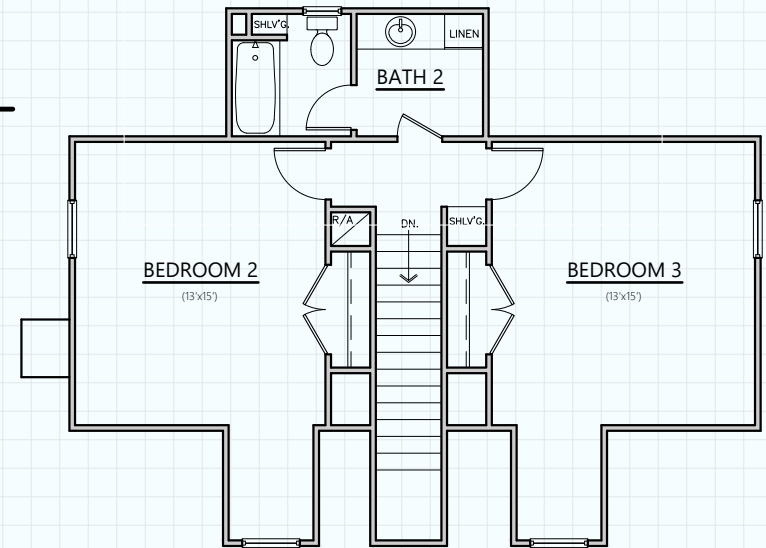
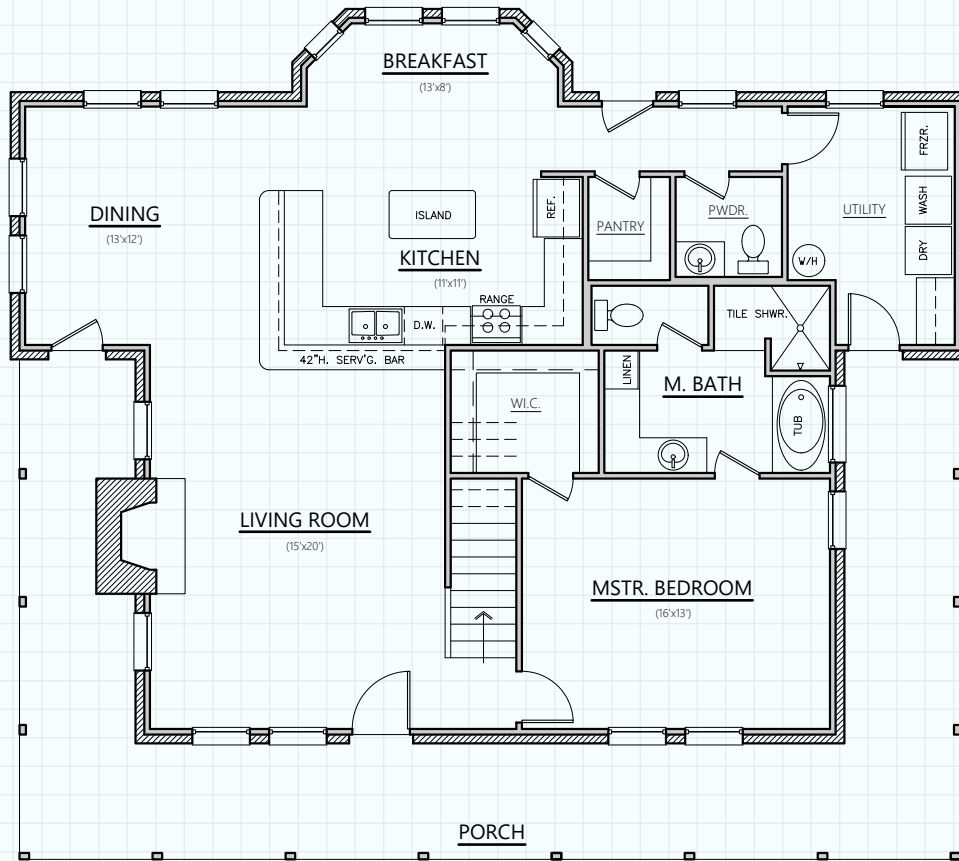


THE WILLOW SPRINGS

FIRST FLOOR:	1,410 SQ. FT.
SECOND FLOOR:	668 SQ. FT.
LIVING (A/C):	2,078 SQ. FT.
PORCHES:	579 SQ. FT.
MAS. LUG:	36 SQ. FT.
SLAB:	2,025 SQ. FT.
TOTAL:	2,693 SQ. FT.



Hill Country
CLASSICS™
CUSTOM HOMES
Boerne Texas

34535 IH 10 West
 Boerne, TX 78006
 (830) 249-2920
 hillcountryclassics.com