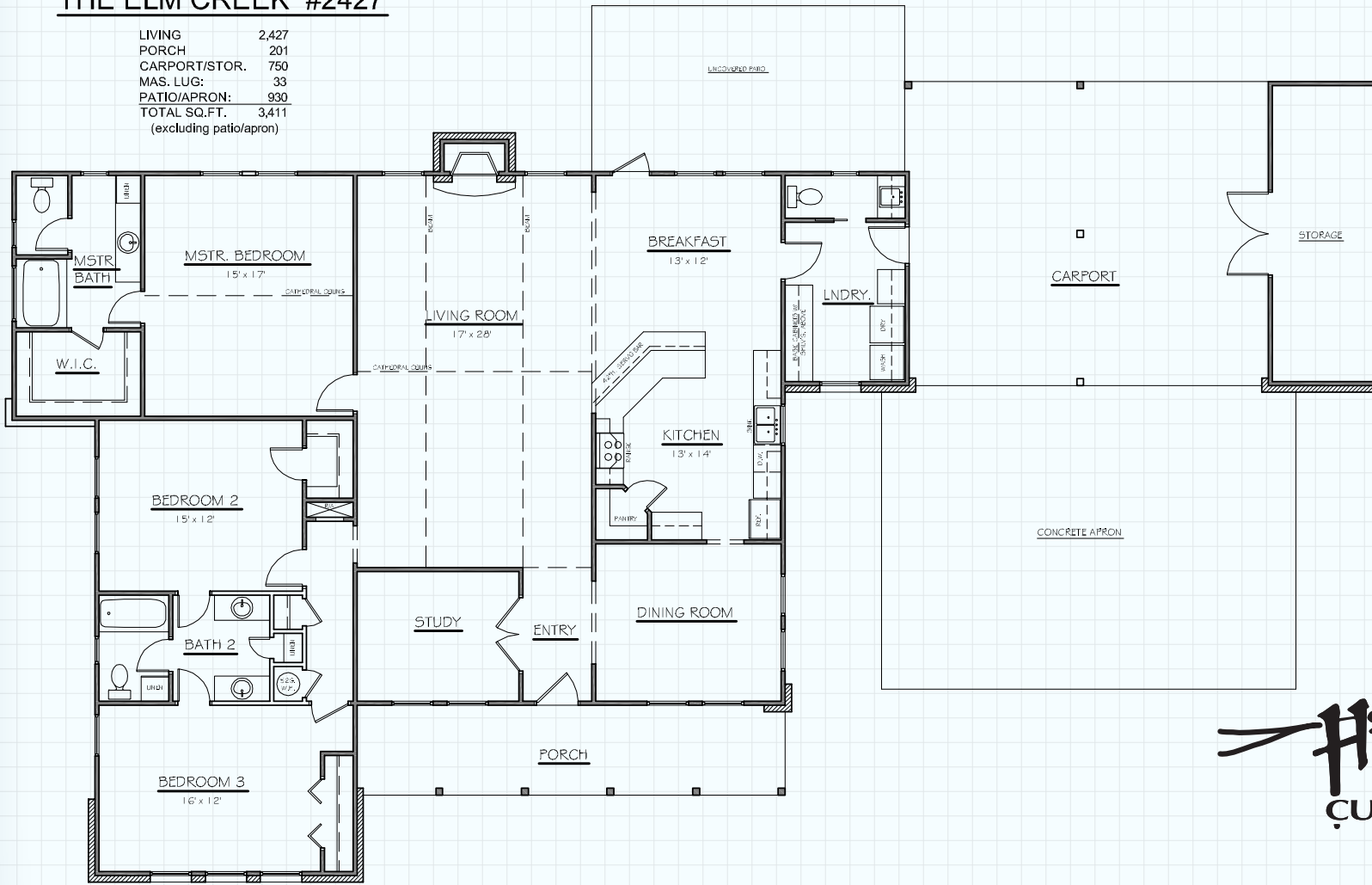




THE ELM CREEK #2427

LIVING 2,427
 PORCH 201
 CARPORT/STOR. 750
 MAS. LUG: 33
 PATIO/APRON: 930
 TOTAL SQ.FT. 3,411
 (excluding patio/apron)



34535 IH 10 West
 Boerne, TX 78006
 (830) 249-2920
 hillcountryclassics.com